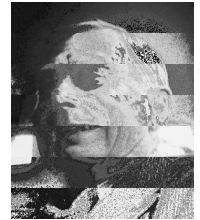


# George's Strathspey

A 40-bar Strathspey for 4 couples in a 4-couple longwise set

Two Chords: on the second chord, 3<sup>rd</sup> and 4<sup>th</sup> couples cross to the opposite sides.



- 1-4 1<sup>st</sup> couple with 2<sup>nd</sup> couple and 3<sup>rd</sup> couple with 4<sup>th</sup> couple dance half reels of four across. To begin, 1<sup>st</sup> woman passes 2<sup>nd</sup> man by the right while 1<sup>st</sup> man dances across the set to pass 2<sup>nd</sup> woman by the right. Similarly, 4<sup>th</sup> woman passes 3<sup>rd</sup> man by the right while 4<sup>th</sup> man dances across the set to pass 3<sup>rd</sup> woman by the right. On bar 4, 1<sup>st</sup> couple and 4<sup>th</sup> couple give left hands in passing partners and retain hold in the middle in 2<sup>nd</sup> and 3<sup>rd</sup> places respectively while 2<sup>nd</sup> couple finish in 1<sup>st</sup> place on opposite sides and 3<sup>rd</sup> couple finish in 4<sup>th</sup> place on own sides. Fig.1
- 5-6 1<sup>st</sup> and 4<sup>th</sup> couples dance left hands across halfway.
- 7-8 1<sup>st</sup> man with 4<sup>th</sup> woman and 4<sup>th</sup> man with 1<sup>st</sup> woman turn left hand moving out to the sides to finish facing up and down. ie 1<sup>st</sup> man faces 3<sup>rd</sup> woman and 4<sup>th</sup> woman faces 2<sup>nd</sup> man on women's side, as 1<sup>st</sup> woman faces 3<sup>rd</sup> man and 4<sup>th</sup> man faces 2<sup>nd</sup> woman on men's side
- 9-16 All dance reels of four on the sides to finish with nearer hands joined to form a St Andrews Cross, all facing clockwise. As 1<sup>st</sup> woman and 4<sup>th</sup> woman finish the reel of four they turn to the left to face the direction they have come from and join 1<sup>st</sup> man, and 4<sup>th</sup> man who take right hands in the middle as 2<sup>nd</sup> man and 3<sup>rd</sup> man take nearer hands with 4<sup>th</sup> and 1<sup>st</sup> woman resp. 2<sup>nd</sup> woman and 3<sup>rd</sup> woman also take nearer hands with 4<sup>th</sup> and 1<sup>st</sup> man respectively, on the diagonal. Fig.2
- 17-20 All dance right hands across halfway to finish facing on the diagonal 3<sup>rd</sup> couple in 1<sup>st</sup> place facing 1<sup>st</sup> couple and 2<sup>nd</sup> couple in 4<sup>th</sup> place facing 4<sup>th</sup> couple. Fig.3
- 21-22 All set.
- 23-24 All turn right hands halfway to change places. To finish 2<sup>nd</sup> couple with woman leading facing 4<sup>th</sup> man and 3<sup>rd</sup> couple with woman leading facing 1<sup>st</sup> man. Fig.4
- 25-32 All dance reels of three in tandem on the sides passing by the right to begin. Couples in tandem change the lead at the ends to finish passing by the right, in the middle.
- 33-36 2<sup>nd</sup> and 3<sup>rd</sup> couples dance to the ends, women leading and parting to face across and turn both hands to finish 2<sup>nd</sup> couple on opposite sides in 4<sup>th</sup> place and 3<sup>rd</sup> couple on own sides in 1<sup>st</sup> place. 1<sup>st</sup> couple step down and 4<sup>th</sup> couple step up one place on bars 35-36.
- 37-40 All dance eight hands round halfway. Finish 2,4,(1),(3)

Repeat from new positions

Tunes: George Bateson's Strathspey and Alison Bateson's Strathspey by John Renton

Devised by Stephen Webb in April 2012

Devised to mark the 80<sup>th</sup> birthday of George Bateson on 20<sup>th</sup> April 2012. George along with his brothers founded the Berkhamsted Strathspey & Reel Club and with his wife Alison has steered the club on a steady course for sixty years. (This dance was first danced as a demonstration by club members for George on 24<sup>th</sup> April after the club AGM in 2012).

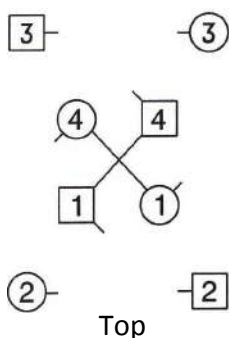


Fig. 1 End of Bar 4

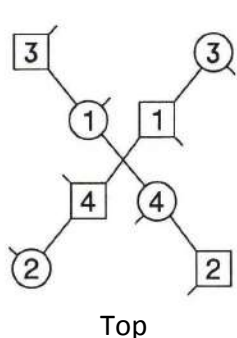


Fig. 2 End of Bar 16

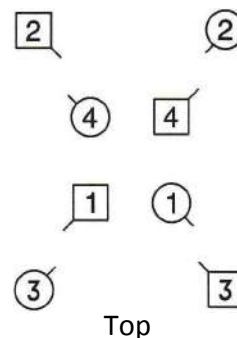


Fig. 3 End of Bar 20

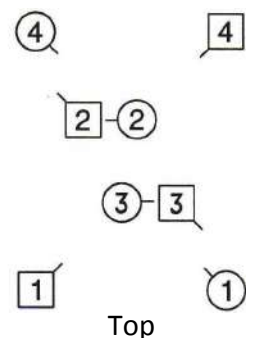


Fig. 4 End of Bar 24