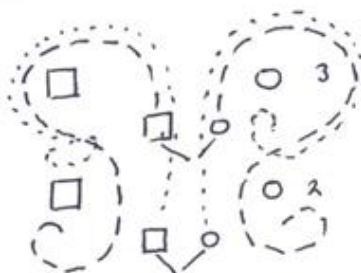


## THE JACARANDA TREE

4 Couple 32 bar reel.

Bars 1 - 8      1st and 3rd couples \*dance down the middle (3rd couple leading), cast up round 4th couple \*dance up the middle 3rd couple to top place and 1st couple to 3rd place.  
(1st and 3rd couples cast out into new place).



9 - 12      3rd lady and 2nd man, and 1st lady and 4th man, set and changes places right hand.

13 - 16      3rd man and 2nd lady, and 1st man and 4th lady. set and changes places right hand.  
(order is now 2,3,4,1, - all on the wrong side )

17 - 28      1st and 4th couple dance  $\frac{1}{2}$  rights and lefts  
1st and 3rd couple dance  $\frac{1}{2}$  rights and lefts  
1st and 2nd couple dance  $\frac{1}{2}$  rights and lefts

29 - 32      1st couple \*dance to the bottom, while 2s, 3s, and 4, step up.  
(1st couple cast outwards into 4th place.)

NB      \* use inside hands

Devised by Betty Smith ( Belfast Branch RSCDS) whilst visiting Florida Branch. May 1986.