

KIRKINTILLOCH
a 32-bar strathspey for 3 couples.

1-8:

1st cp set, half turn with 2H, face up, cast off opposite sides (2nd cp move up) and set to 3rd cp.

9-10:

1st man with 3rd lady, 1st lady with 3rd man: half turn 2H to face out with backs to pts.

11-16:

1st cp cast down to meet below 3rd place; 2nd & 3rd ladies pass L shoulder; 2nd & 3rd men pass R shoulder, to begin symmetrical reels of three on the sides.

17-22:

1st cp, with nearer hands, dance up, give free hand to 2nd man/2nd lady to turn symmetrically, then give other hand to 3rd man/3rd lady to turn the other way (1st cp finish in 2nd place).

23-24:

Taking hands on sides, all set to pt.

25-26:

Six hands round to the left. 1st cp release LH.

27-30:

1st lady: three hands round to the left with 3rd cp (2 steps); she finishes at the top, and then dances down under 3rd cp's arch, as they dance up. 1st man: likewise with 2nd cp to finish in 3rd place, then he dances up under 2nd cp's arch, as they dance down.

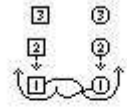
31-32:

1st cp meet in 2nd place. All turn pt RH.

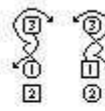
Repeat from new positions.

Devised by Martin Sheffield, 1989.

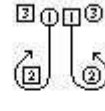
3-6:



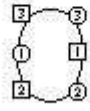
9-10:



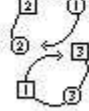
17-20:



25-26:



27-28:



29-30:

