

*MICHAEL'S CEILIDH BAND*

*a 4 x 32 bar jig, square set.*

*1-8:*

*1st & 3rd cps dance half R&Ls without polite turns, then turn corners RH into lines across.*

*9-12:*

*All set, 2nd & 4th cps facing in and advancing & retiring to squeeze the lines in and out like an accordeon.*

*13-16:*

*1st & 3rd cps turn pts LH once and a quarter into a line up/down the middle. Ladies take RH.*

*17-20:*

*Like a bow across the strings, 1st & 3rd cps, in a straight line, dance four slips steps down and four back.*

*21-22:*

*1st & 3rd cps set, the ladies releasing each other's hands and turning under pt's LH. In doing so, 1st cp dance up to face 2nd, 3rd cp down to face 4th,*

*23-24:*

*and all set.*

*25-:*

*1st & 2nd cps, 3rd & 4th cps, change places passing R shoulder with person opposite ...*

*26-30:*

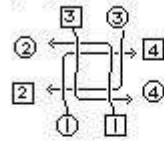
*and dance round clockwise into side places, while 2nd & 4th cps dance LH across once round and then out into 1st/3rd places.*

*31-32:*

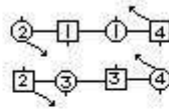
*All set facing the centre.*

*Devised by Martin Sheffield, 1996, for Mike and Michel, who have given the dancers in southeastern France so much pleasure with their music.*

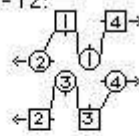
1-4:



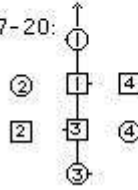
9-10:



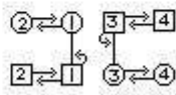
11-12:



17-20:



21-25:



26-30:

